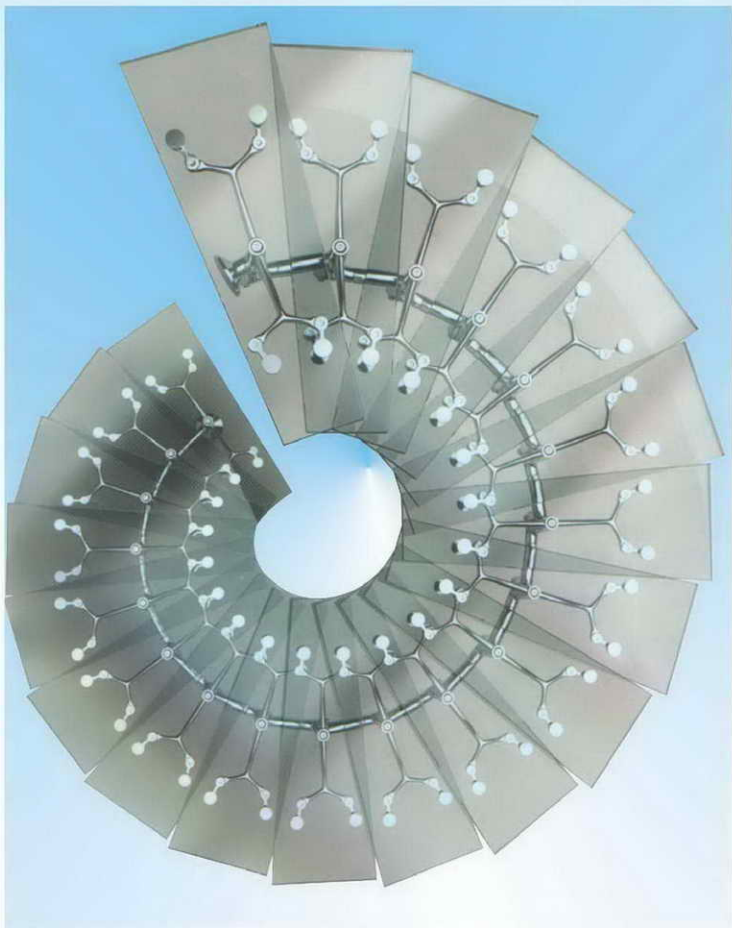


组合楼梯配件系列
Assemble staircase Series

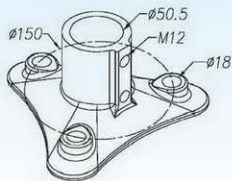


Staircase 1# 1#组合楼梯配件

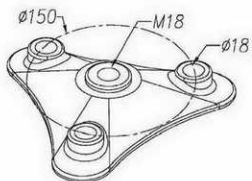
<p>上支座N01-01 Upper supporter N01-01</p>	
<p>骨件N01-02 Keel N01-02</p>	
<p>二踏步骨件N01-03 Second foot step keel N01-03</p>	

Staircase 1# 1#组合楼梯配件

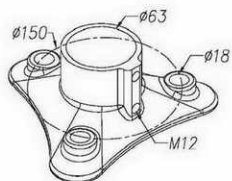
二踏步支座N01-04
Second Step Supporter N01-04



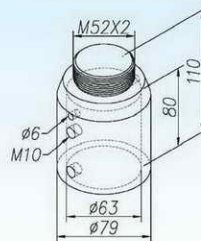
首踏步支座N01-05
First Step Supporter N01-05



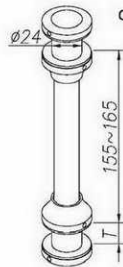
加强支座N01-06
Strengthened supporter N01-06



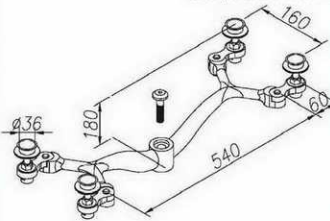
加强支座头N01-07
Strengthened supporter cap N01-07



连接杆 N01-08
Connecting Rod N01-08



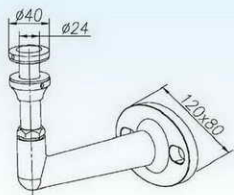
踏板固定件 N01-09
Footplate fixer N01-09



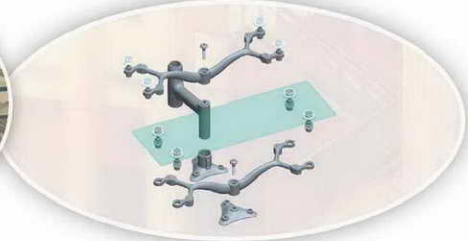
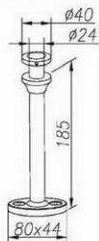
Staircase 1# 1#组合楼梯配件

1#組合樓梯配件 Staircase 1#

靠牆支撐件N01-10
Wall Supporter N01-10



首踏步支撐件 N01-11
First Step Supporter N01-11



细索配件 Micro Cable Series

不锈钢绳的力学性能

Mechanical Performance of Stainless Steel wire rope

结构 Structure	公称直径(mm) Nominal Diameter(mm)	最小破断拉力(kN) Minimum Breaking Tension(kN)	参考重量(kg / 100m) Reference Weight (kg / 100m)
 6×7+1WS (7×7)	φ3.0	6.37	3.70
	φ4.0	9.51	6.50
	φ5.0	14.7	10.5
	φ6.0	18.6	15.1
 6×19+1WS (7×19)	φ4.0	10.7	6.7
	φ5.0	17.4	10.5
	φ6.0	23.5	14.9

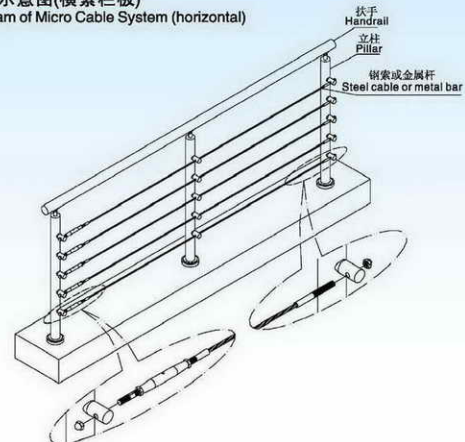
注：以上内容引用GB/T 9944-2002《不锈钢绳》

Note: Above content quoted from GB/T 9944-2002 Stainless Steel Wire Ropes



钢索护栏安装示意图(横索栏板)

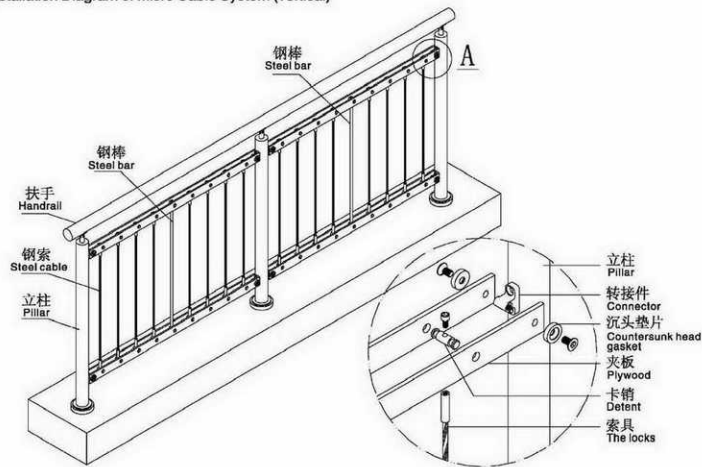
Installation Diagram of Micro Cable System (horizontal)



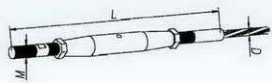
注：护栏工程在平台处不建议使用栏板为横钢索的护栏，横钢索类护栏建议用于楼梯、斜坡部位。
Horizontal cable system is good for staircase and slop, however, for children's safety, we don't suggest this on platform.

钢索护栏安装示意图(竖索栏板)

Installation Diagram of Micro Cable System (vertical)



索锚具(带调节器)
型号: A01-W
Adjustable Anchor
Code: A01-W



D	L mm		M
Ø3	max	151	M5
	min	121	
Ø4	max	190	M6
	min	149	
Ø5	max	215	M8
	min	171	
Ø6	max	251	M10
	min	205	

索锚具
型号: A-W
Anchor
Code: A-W



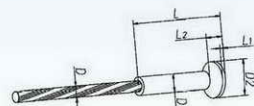
D	D1	L	L1	M
Ø3	Ø6	63	28	M5
Ø4	Ø7.5	79	33	M6
Ø5	Ø8	92	39	M8
Ø6	Ø10	111	45	M10

索锚具
型号: G-W
Anchor
Code: G-W



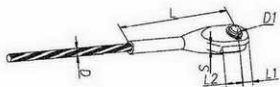
D	D1	L
Ø3	Ø6	31
Ø4	Ø8	45
Ø5	Ø8	45
Ø6	Ø10	54

索锚具
型号: T-W
Anchor
Code: T-W



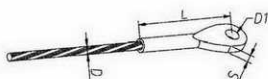
D	D1	D2	L	L1	L2
Ø3	Ø6	11	35	4	1.5
Ø4	Ø8	14	50	5	2
Ø5	Ø8	14	50	5	2
Ø6	Ø10	17	60	6	2.5

索锚具
型号: B02-W
Anchor
Code: B02-W



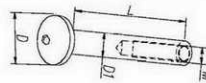
D	D1	L	L1	L2	S
Ø3	Ø5	57	9.5	12	3.5
Ø4	Ø6	62	11	14	4.5
Ø5	Ø8	75	12.8	16	5.5
Ø6	Ø10	86	15	19	6.5

索锚具
型号: D01-W
Anchor
Code: D01-W



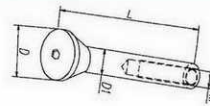
D	D1	L	S
Ø3	Ø5.5	57	3
Ø4	Ø6.5	62	4
Ø5	Ø8.5	75	5
Ø6	Ø10.5	86	6

索锚具
型号: LJ-6
Anchor
Code: LJ-6



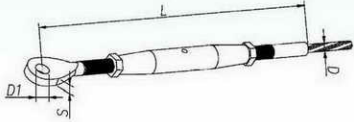
D	D1	L	M
Ø12	Ø7	31	M5
Ø14	Ø8	35.4	M6
Ø18	Ø10	44.2	M8
Ø24	Ø15	56.3	M10

索锚具
型号: LJ-7
Anchor
Code: LJ-7



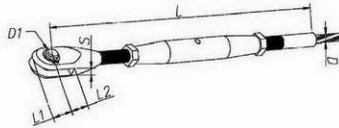
D	D1	L	M
Ø12	Ø7	35	M5
Ø14	Ø8	40	M6
Ø17	Ø10	50	M8
Ø23	Ø15	56	M10

索锚具(带调节器)
型号: A07-W
Adjustable Anchor
Code: A07-W



D	L mm		D1	S
Ø3	max	156	Ø5.5	3
	min	126		
Ø4	max	191	Ø6.5	4
	min	151		
Ø5	max	212	Ø8.5	5
	min	172		
Ø6	max	256	Ø10.5	6
	min	206		

索锚具(带调节器)
型号: A05-W
Adjustable Anchor
Code: A05-W



D	L mm		D1	L1	L2	S
Ø3	max	156	Ø5	9.5	12	3.5
	min	126				
Ø4	max	191	Ø6	11	14	4.5
	min	151				
Ø5	max	212	Ø8	12.8	16	5.5
	min	172				
Ø6	max	256	Ø10	15	19	6.5
	min	206				

