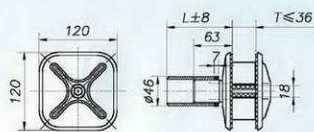
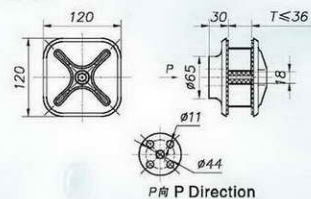




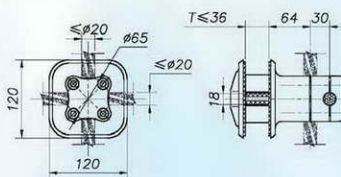
J120B11



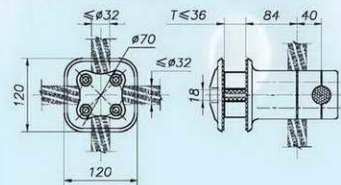
J120B21



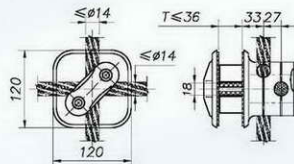
J120B31



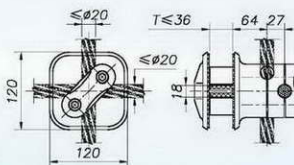
J120B32(原代号Original Code:J120S24)



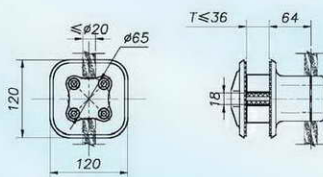
J120B33(原代号Original Code:J120S21)



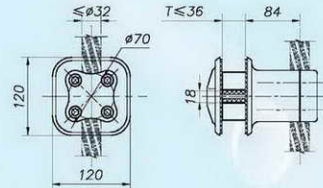
J120B34(原代号Original Code:J120S22)



J120B41



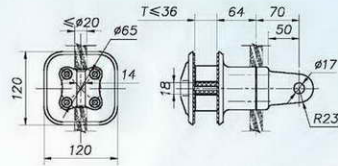
J120B42



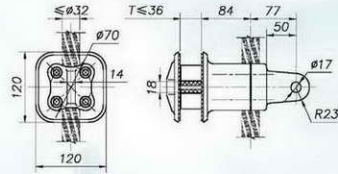
方形系列 Square-Shaped Series



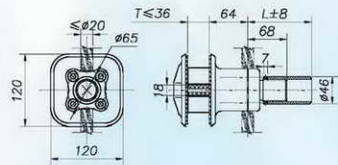
J120B51



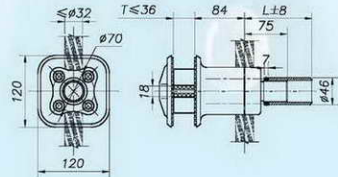
J120B52



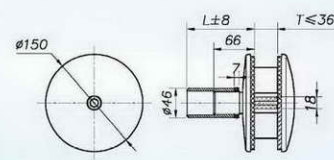
J120B61



J120B62



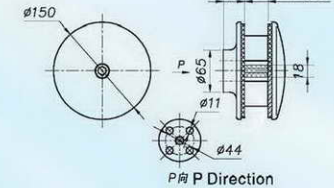
J150A11



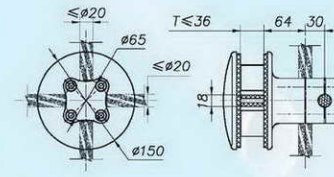
Round-Shaped Series 圓形系列



J150A21

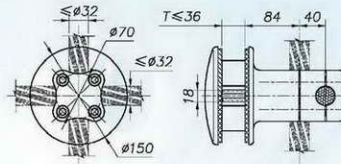


J150A31

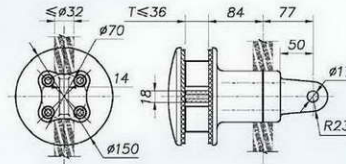




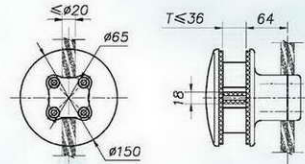
J150A32



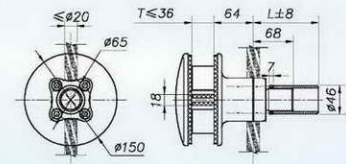
J150A52



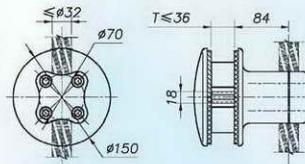
J150A41



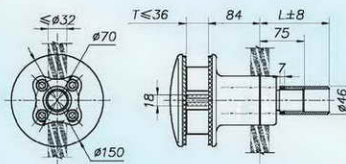
J150A61



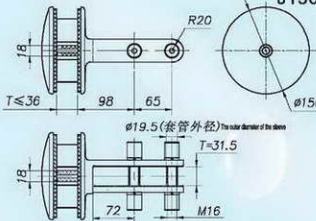
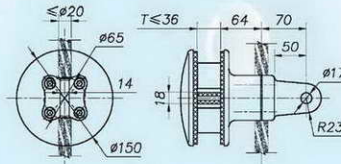
J150A42



J150A62



J150A51

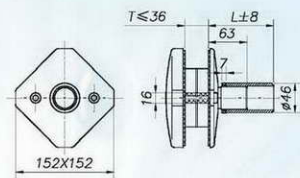


J150A71

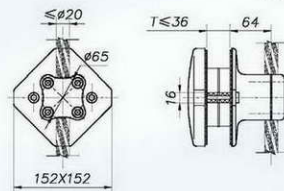




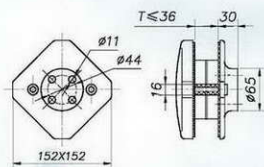
J152A11



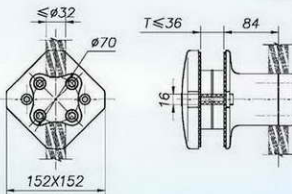
J152A41



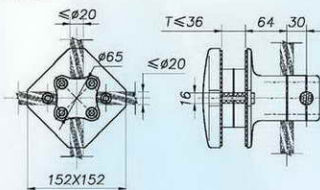
J152A21



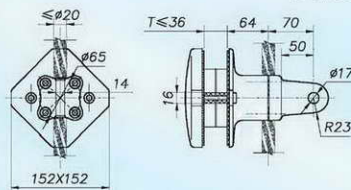
J152A42



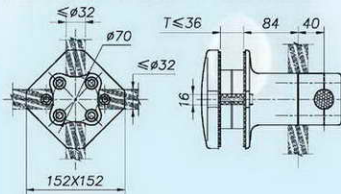
J152A31



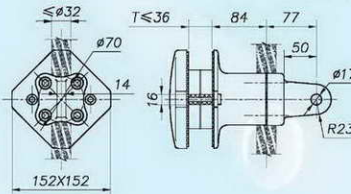
J152A51

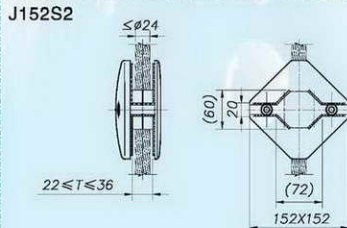
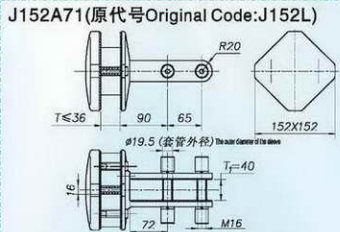
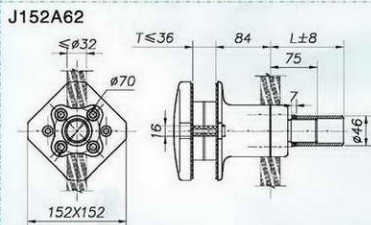
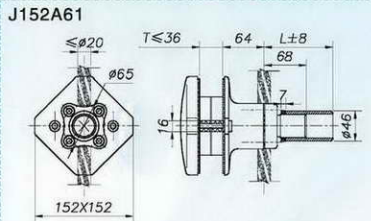


J152A32(原代号Original Code: J152S3)



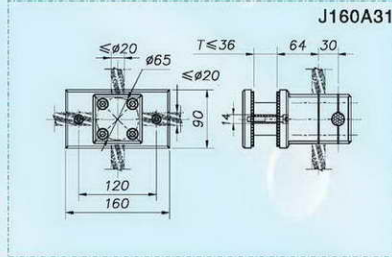
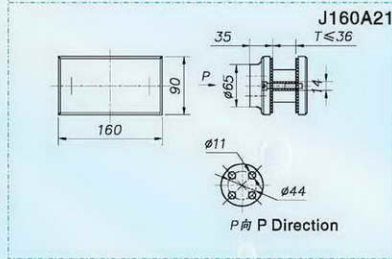
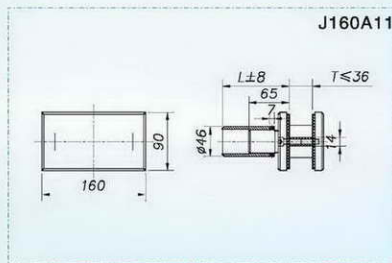
J152A52

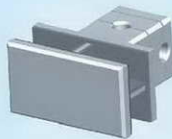




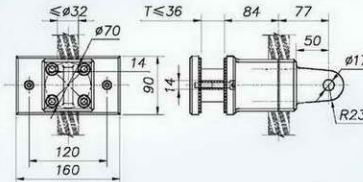
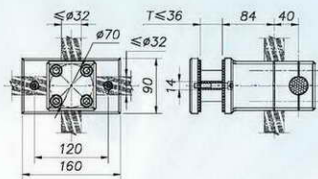
J160系列 Series

- 外盖紧固螺钉位于室内侧，外观简洁大方；
- 有多种外盖造型设计，订货时更换外观代号即可(详见108页)；
- 外盖端面可根据客户要求，制作特定图案或LOGO(详见107页)。
- The outer cover fastening screw is located in the interior. It is of simple and delicate appearance.
- There are kinds of style designs of the outer cover. Just change the appearance code when placing the order (Please refer to Page 108 for the detail.)
- The head face of the outer cover can be made with specific patterns or LOGO according to customers' requirements. (Please refer to Page 107 for the detail.)

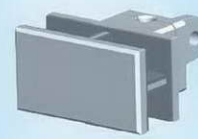




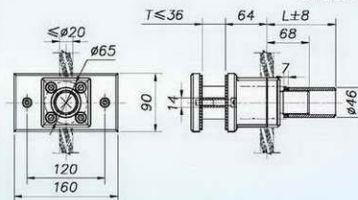
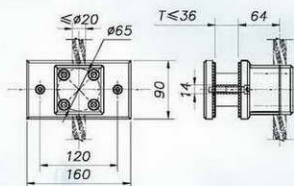
J160A32



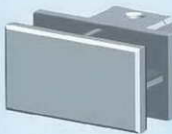
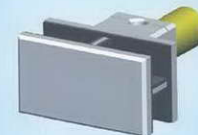
J160A52



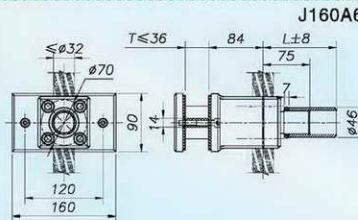
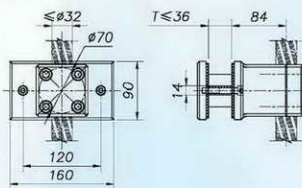
J160A41



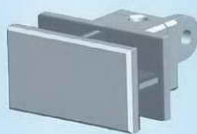
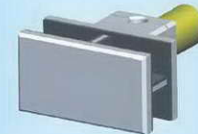
J160A61



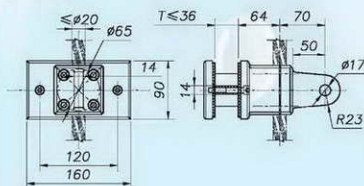
J160A42



J160A62



J160A51



LOGO样本 The Sample for the LOGO.

